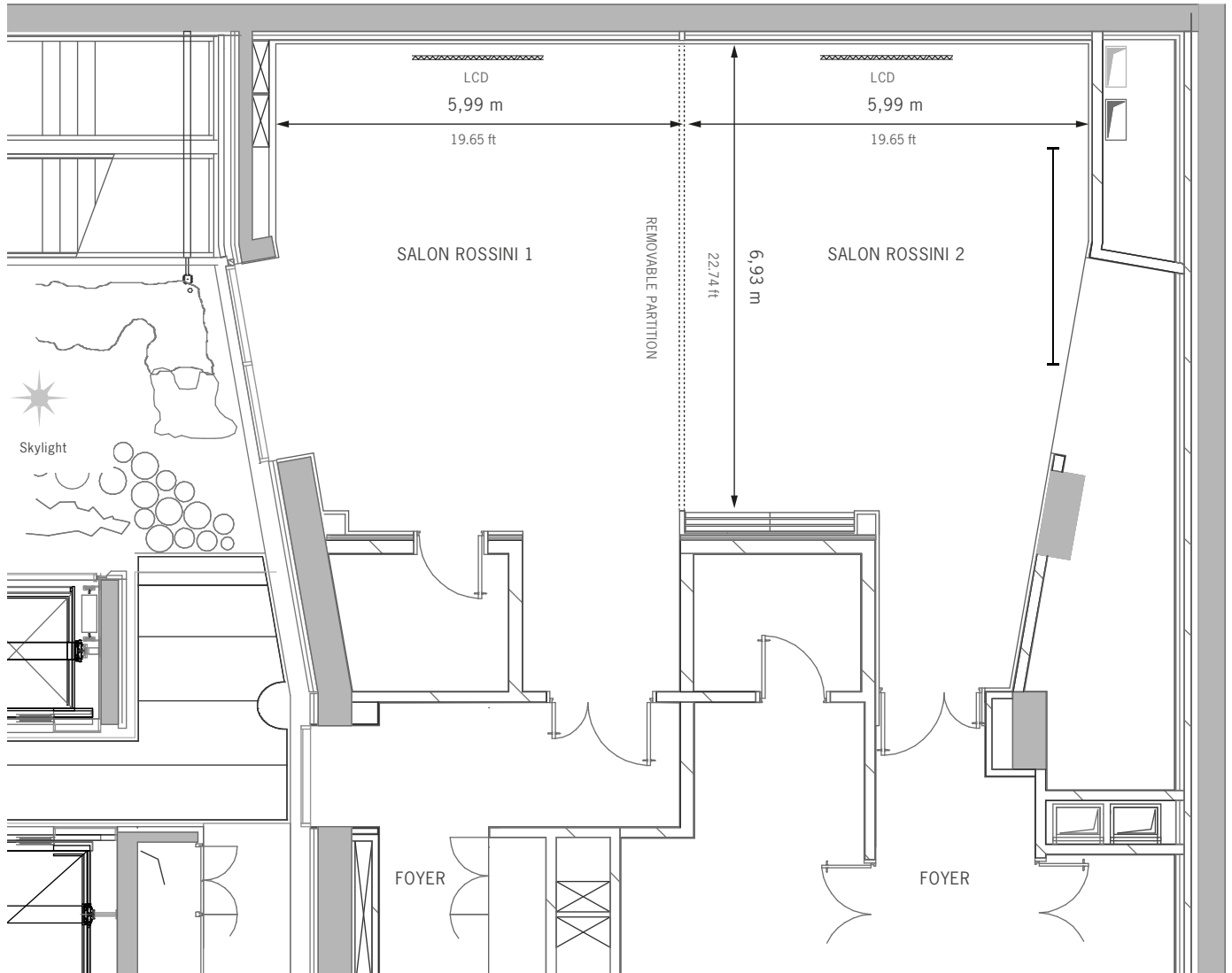


# Salon Rossini



**Legend**

Scale: 1/200

Level : - 3  
Height to ceiling: 3,05 m / 10.01 ft

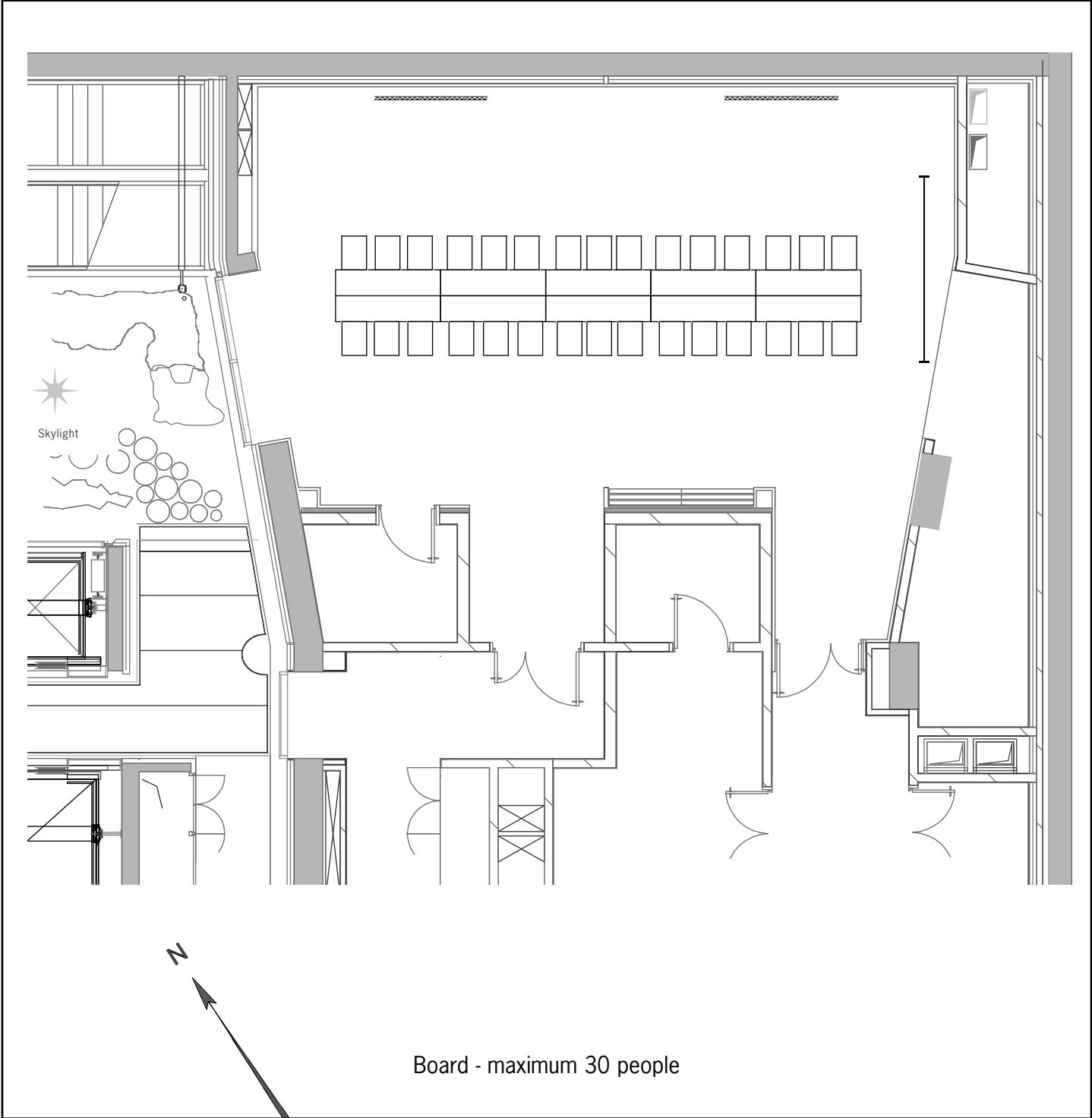
Salon Rossini area: 96 sq m / 1,033 sq ft  
Salon Rossini 1 area: 48 sq m / 517 sq ft  
Salon Rossini 2 area: 48 sq m / 517 sq ft

- retractable screen
- LCD screen
- removable partition
- daylight



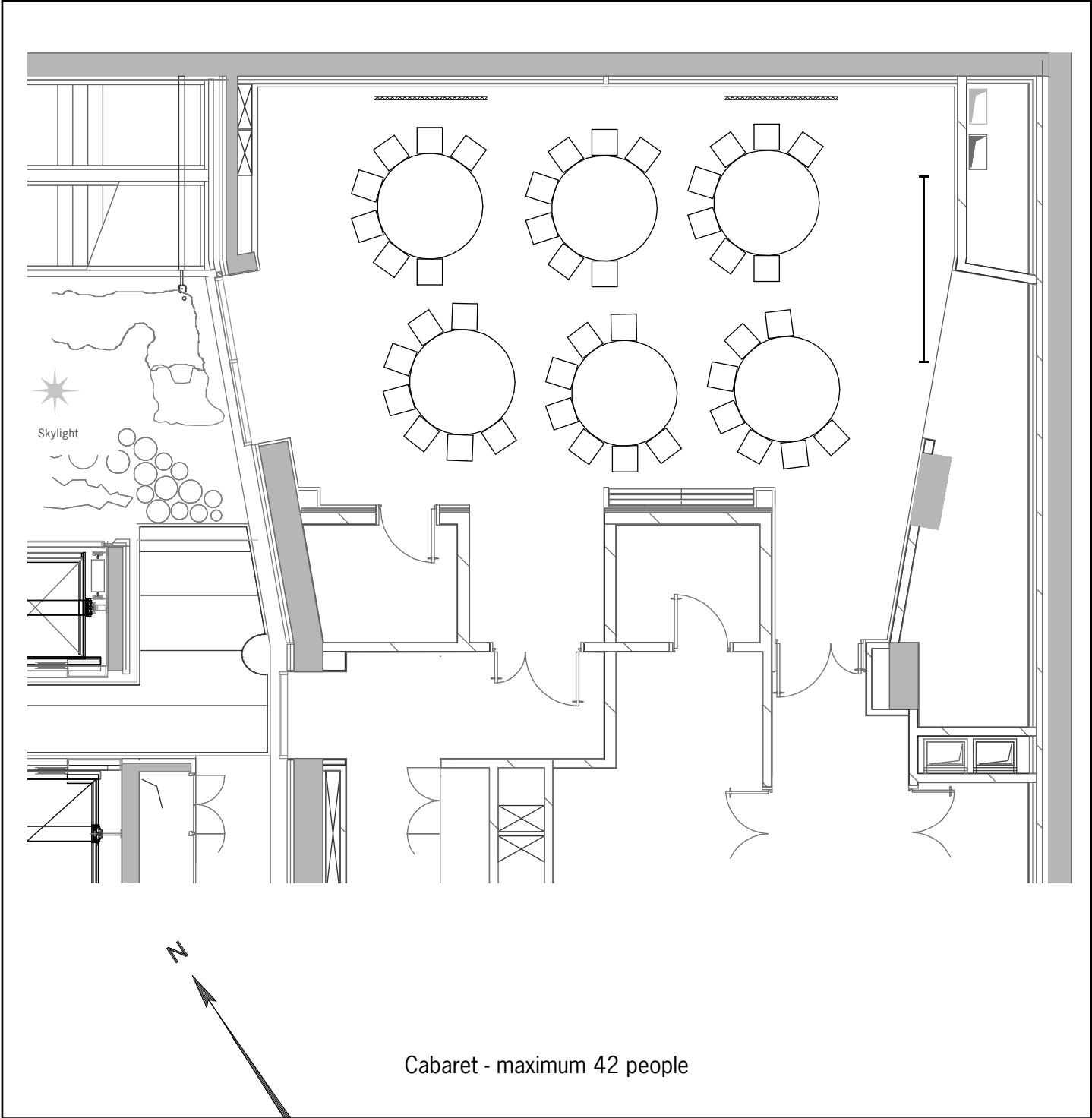
|                 | Board | Cabaret | Classroom | Theatre | U-shape | Hollow Square | Banquet | Cocktail |
|-----------------|-------|---------|-----------|---------|---------|---------------|---------|----------|
| SALON ROSSINI   | 30    | 42      | 36        | 80      | 33      | -             | 60      | 80       |
| SALON ROSSINI 1 | 18    | -       | 18        | 44      | 18      | -             | -       | 40       |
| SALON ROSSINI 2 | 18    | -       | 18        | 44      | 18      | -             | -       | 40       |

Scale : 1/200



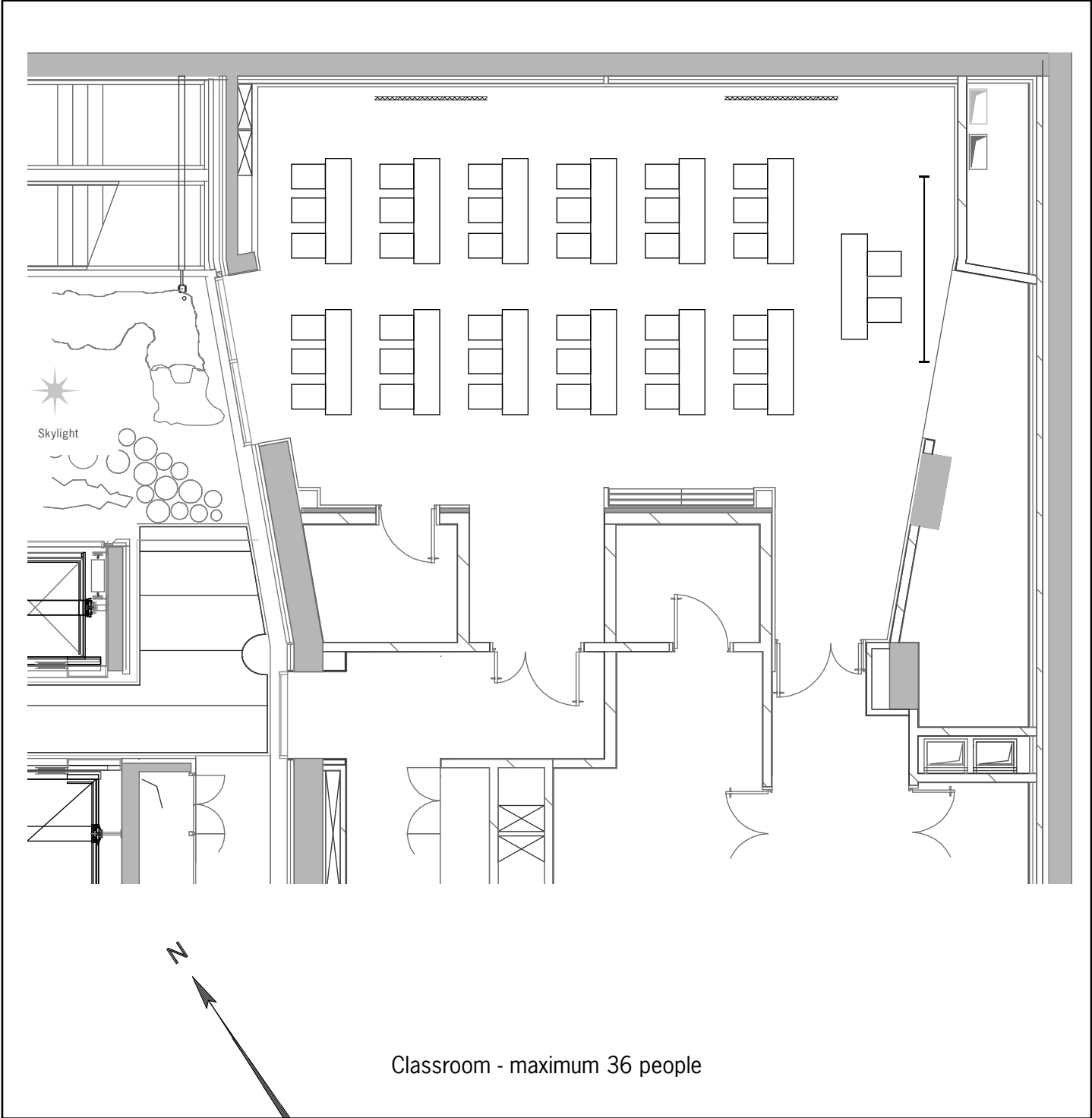
For technical information, please refer to general floorplan (without set-up)

Scale : 1/200



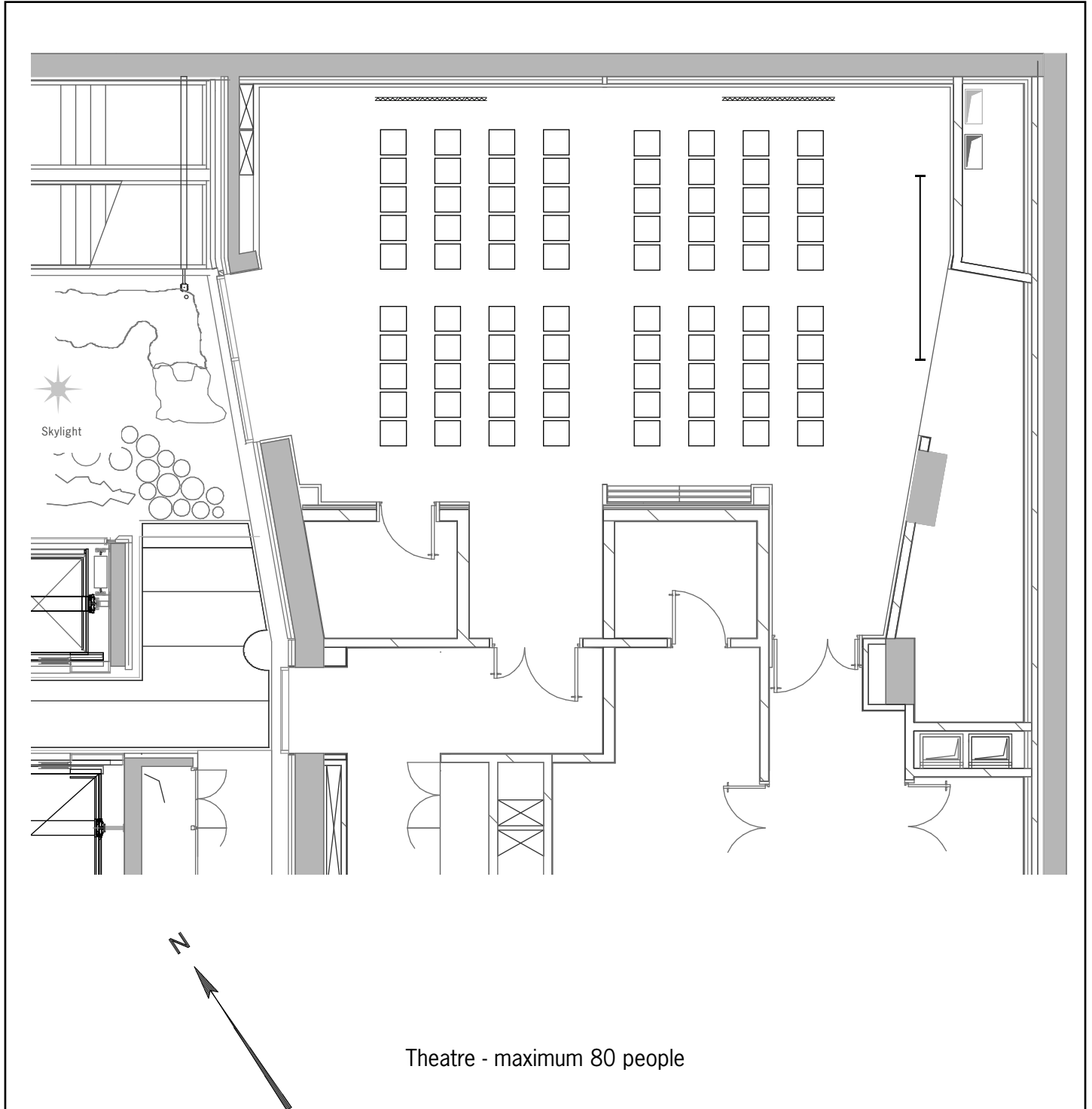
For technical information, please refer to general floorplan (without set-up)

Scale : 1/200



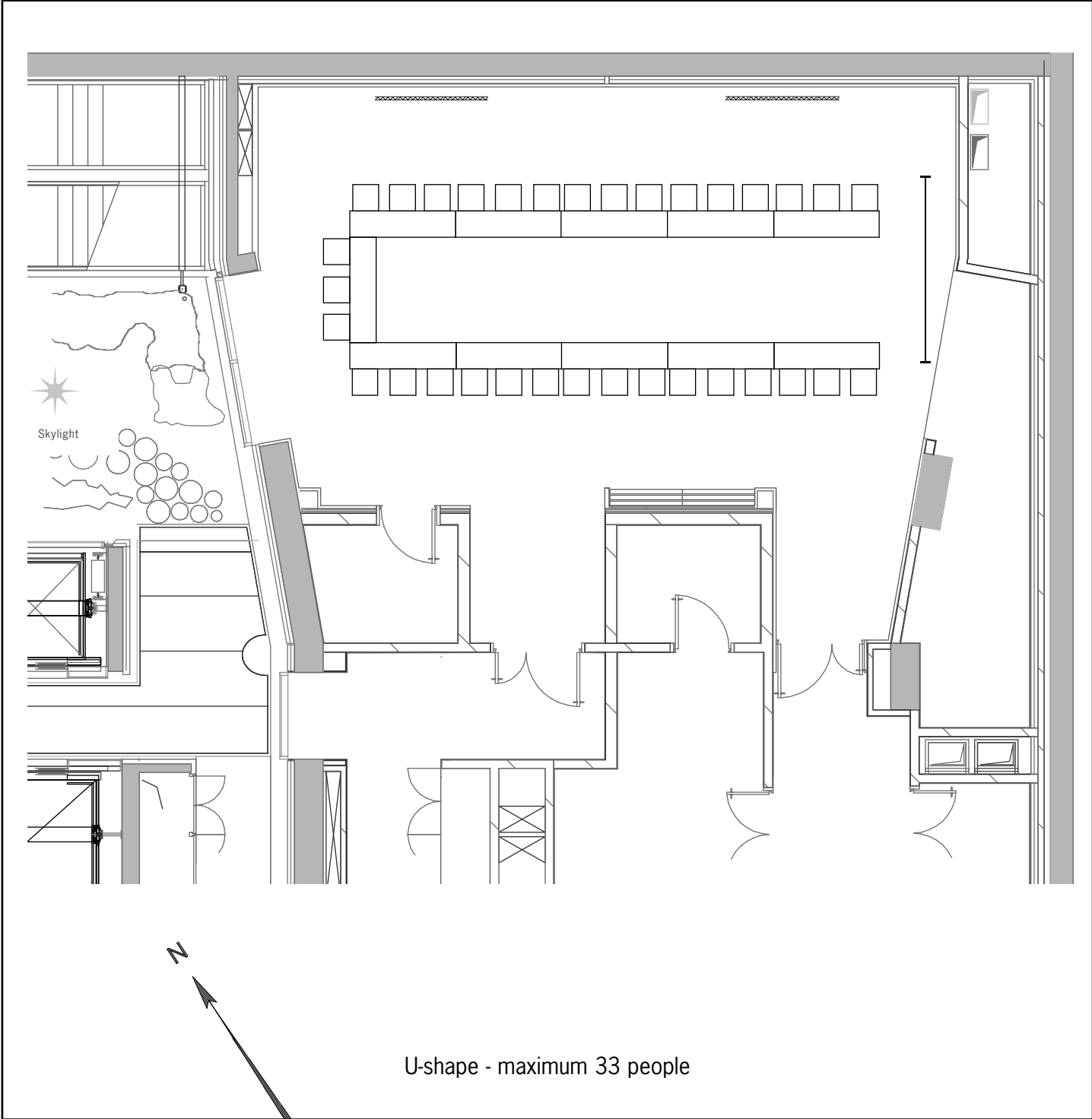
For technical information, please refer to general floorplan (without set-up)

Scale : 1/200



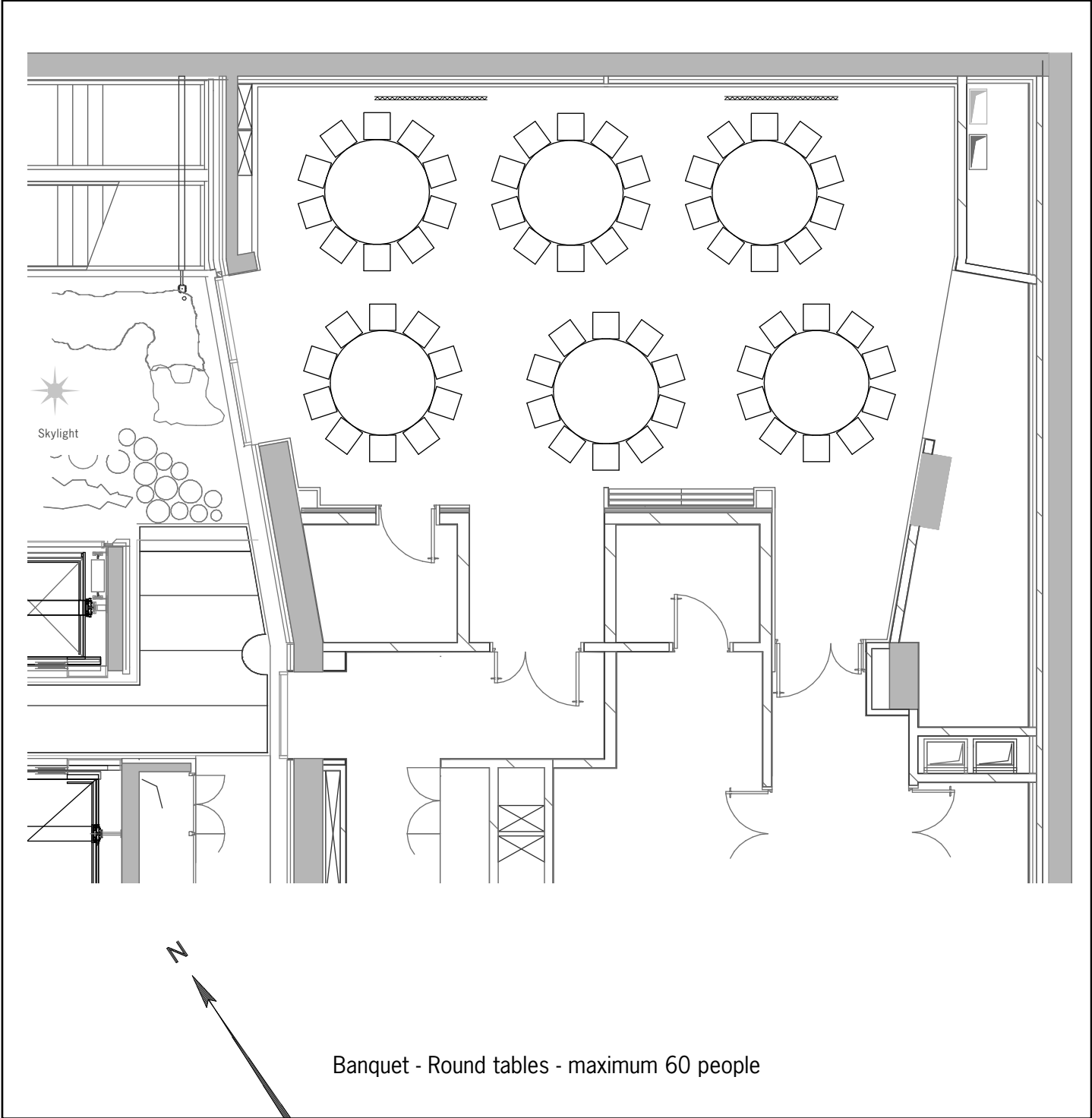
For technical information, please refer to general floorplan (without set-up)

Scale : 1/200

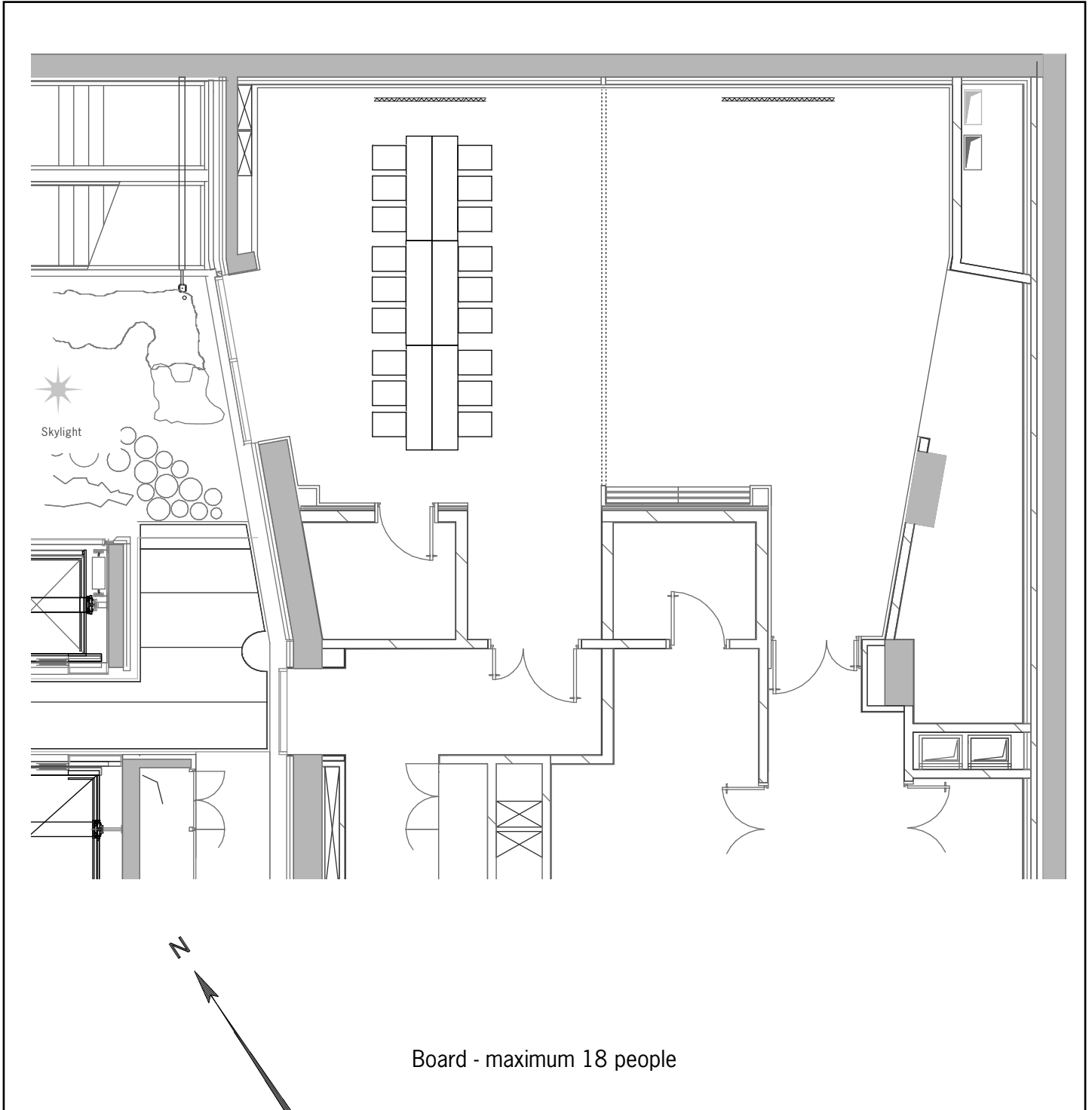


For technical information, please refer to general floorplan (without set-up)

Scale : 1/200



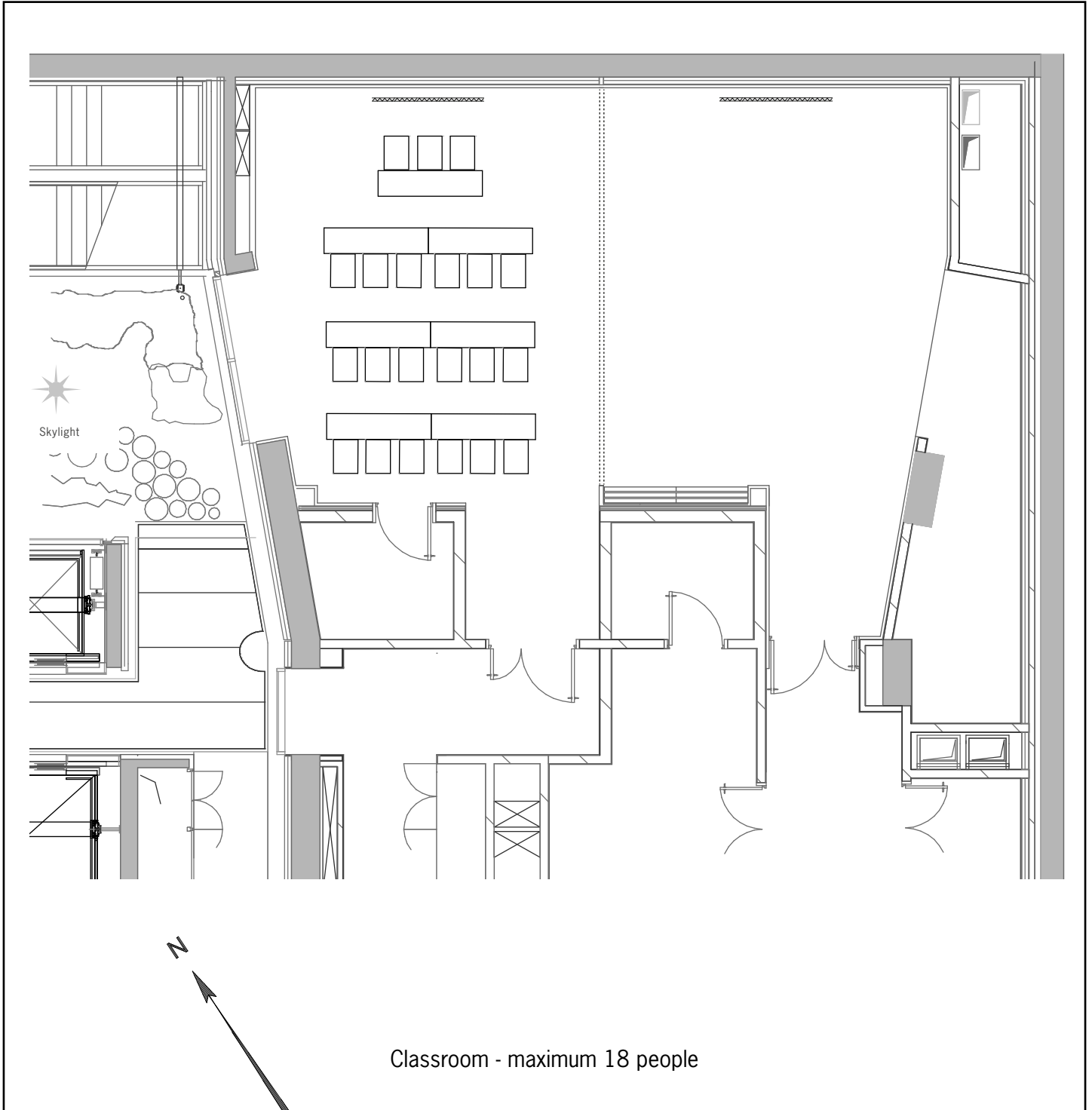
For technical information, please refer to general floorplan (without set-up)



For technical information, please refer to general floorplan (without set-up)

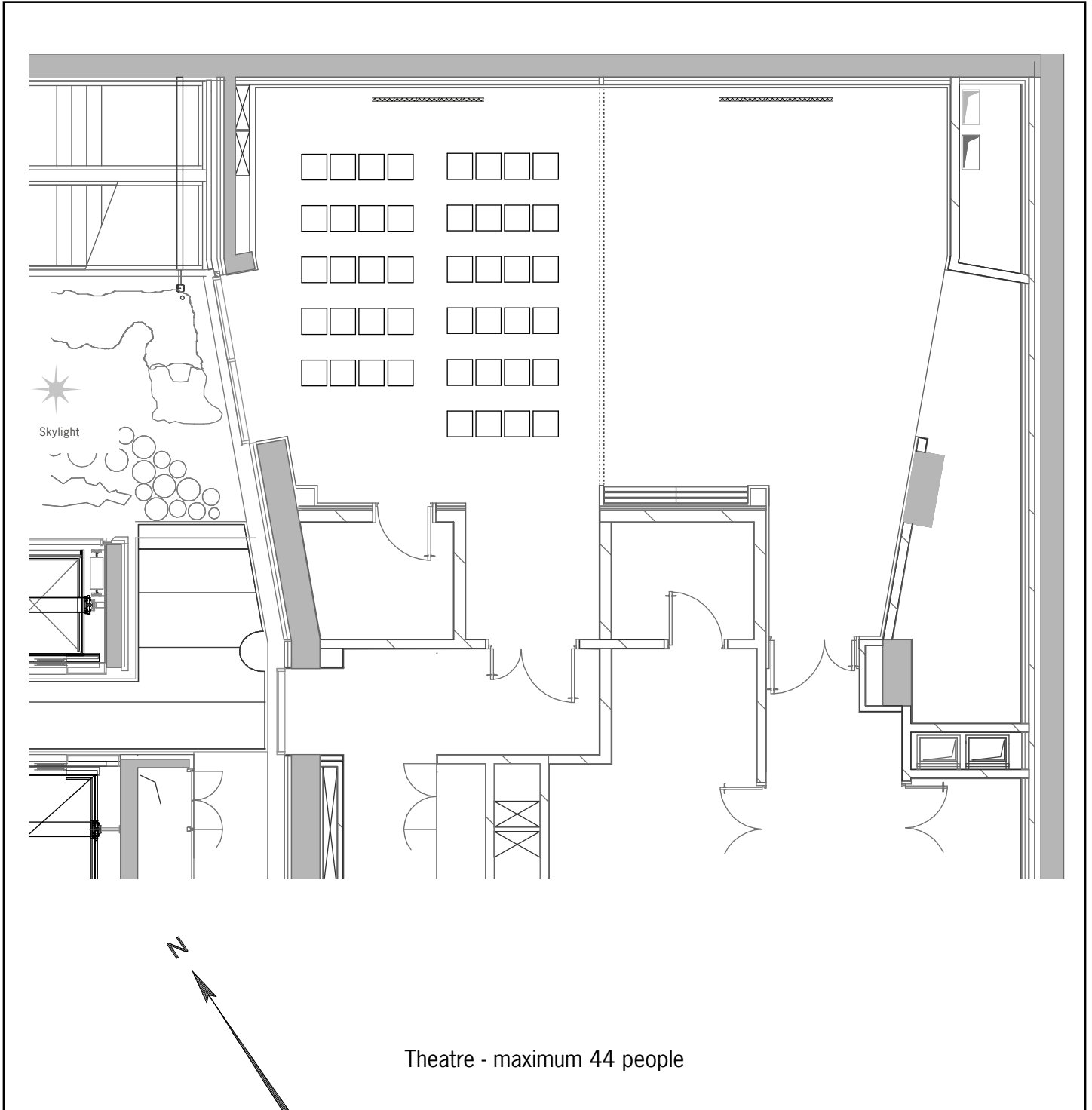


Scale : 1/200



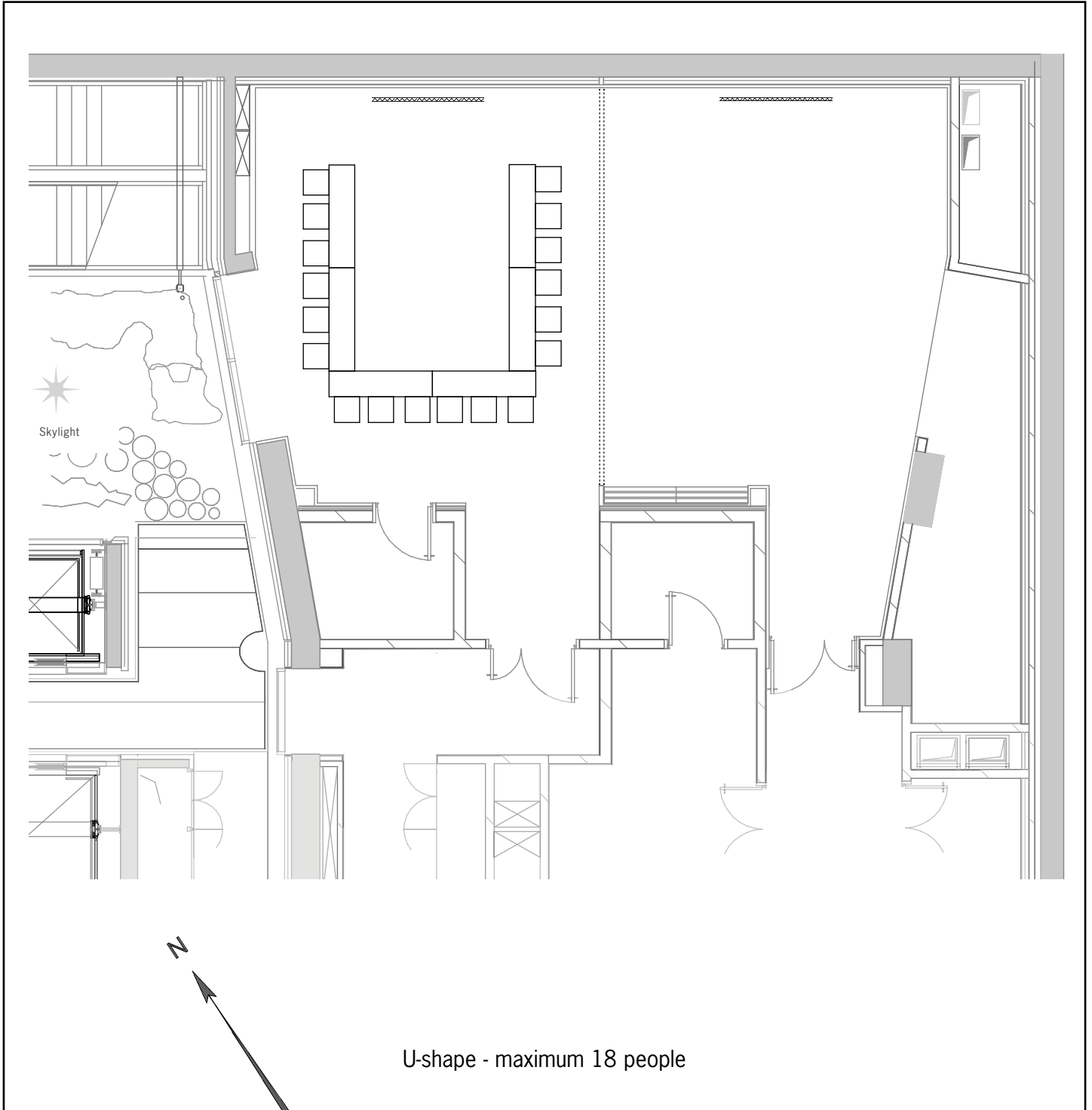
For technical information, please refer to general floorplan (without set-up)

Scale : 1/200



For technical information, please refer to general floorplan (without set-up)

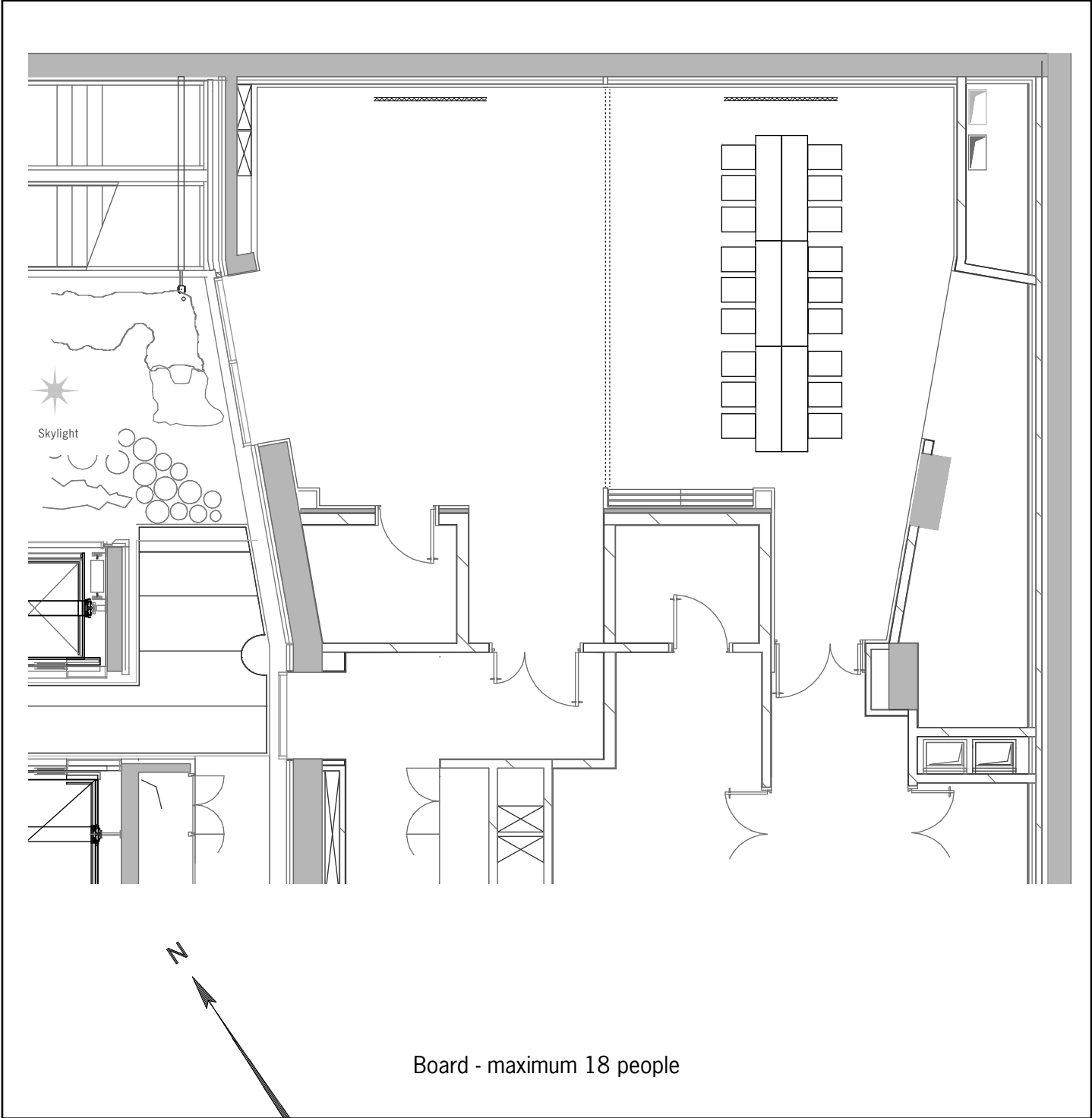
Scale : 1/200



For technical information, please refer to general floorplan (without set-up)

# Salon Rossini 2

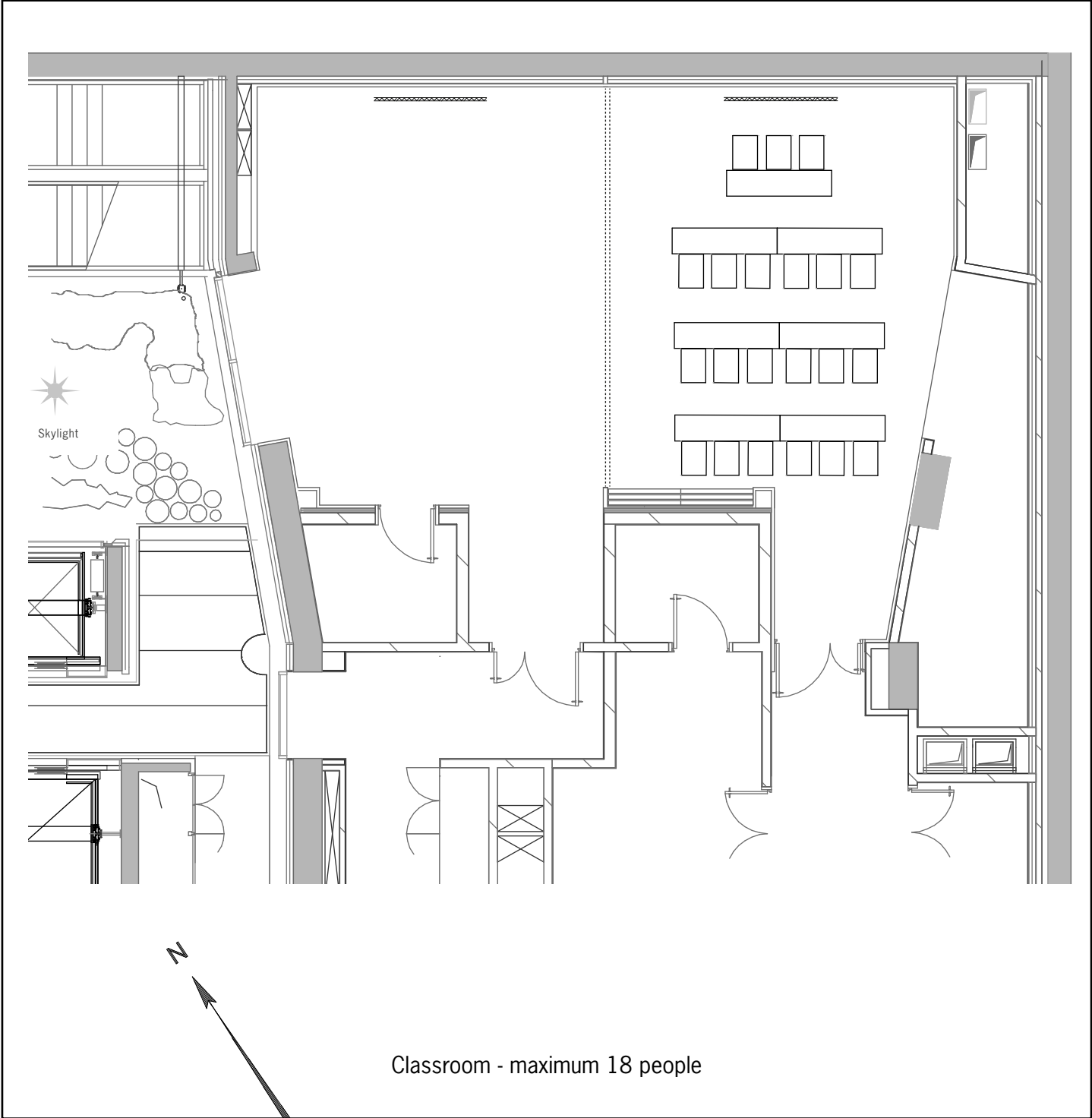
Scale : 1/200



For technical information, please refer to general floorplan (without set-up)

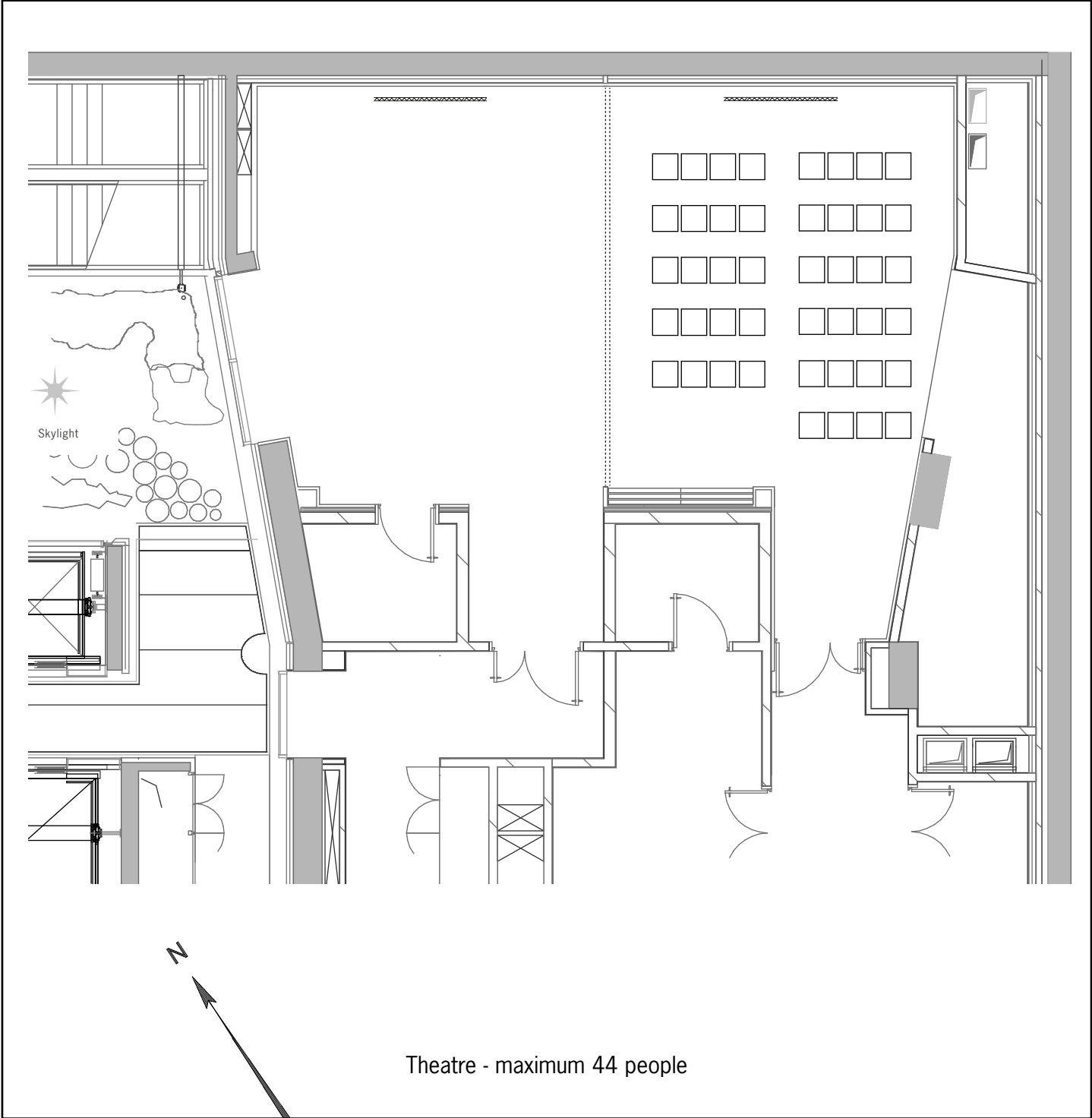
# Salon Rossini 2

Scale : 1/200



For technical information, please refer to general floorplan (without set-up)

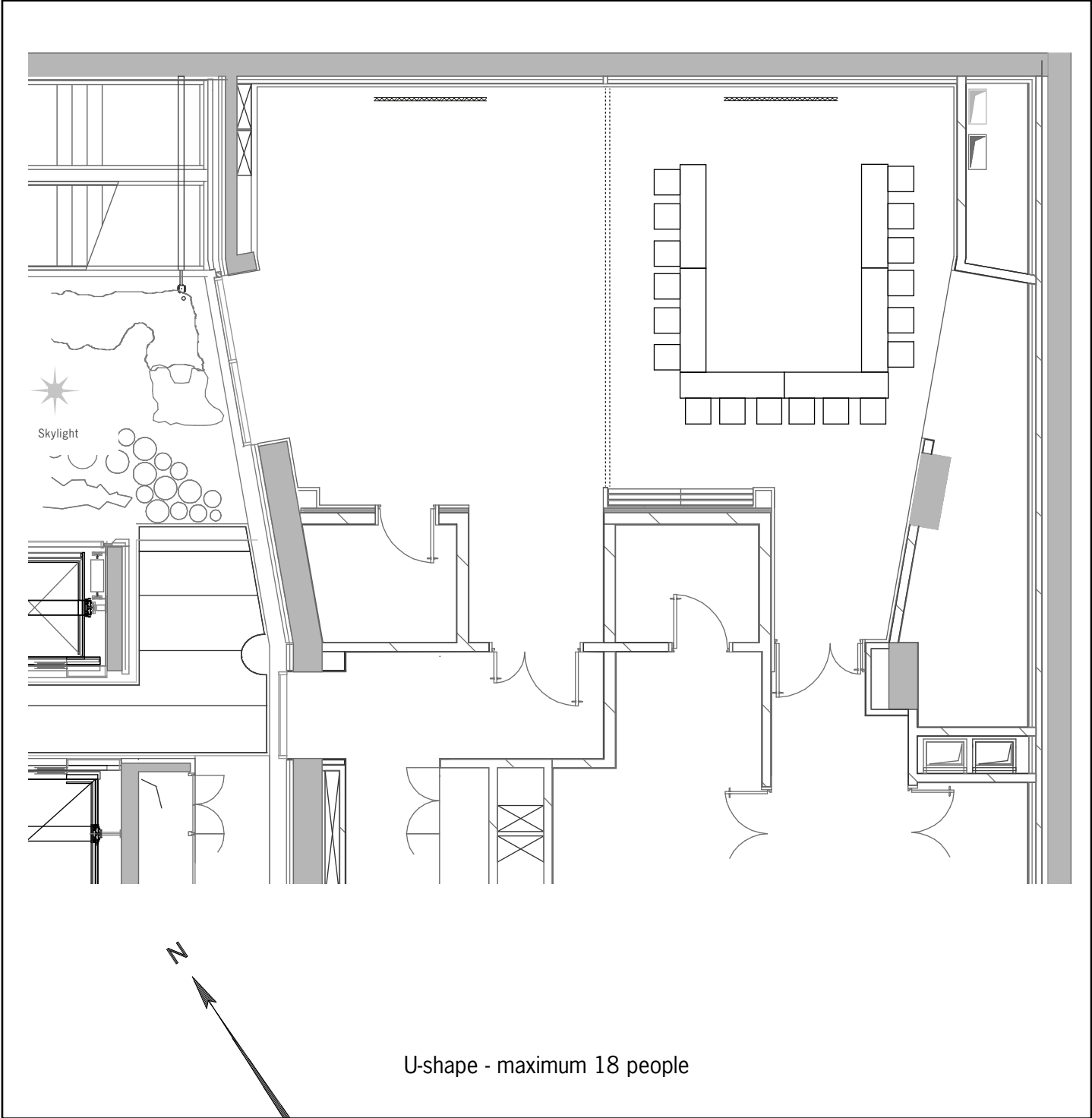
Scale : 1/200



For technical information, please refer to general floorplan (without set-up)

# Salon Rossini 2

Scale : 1/200



For technical information, please refer to general floorplan (without set-up)